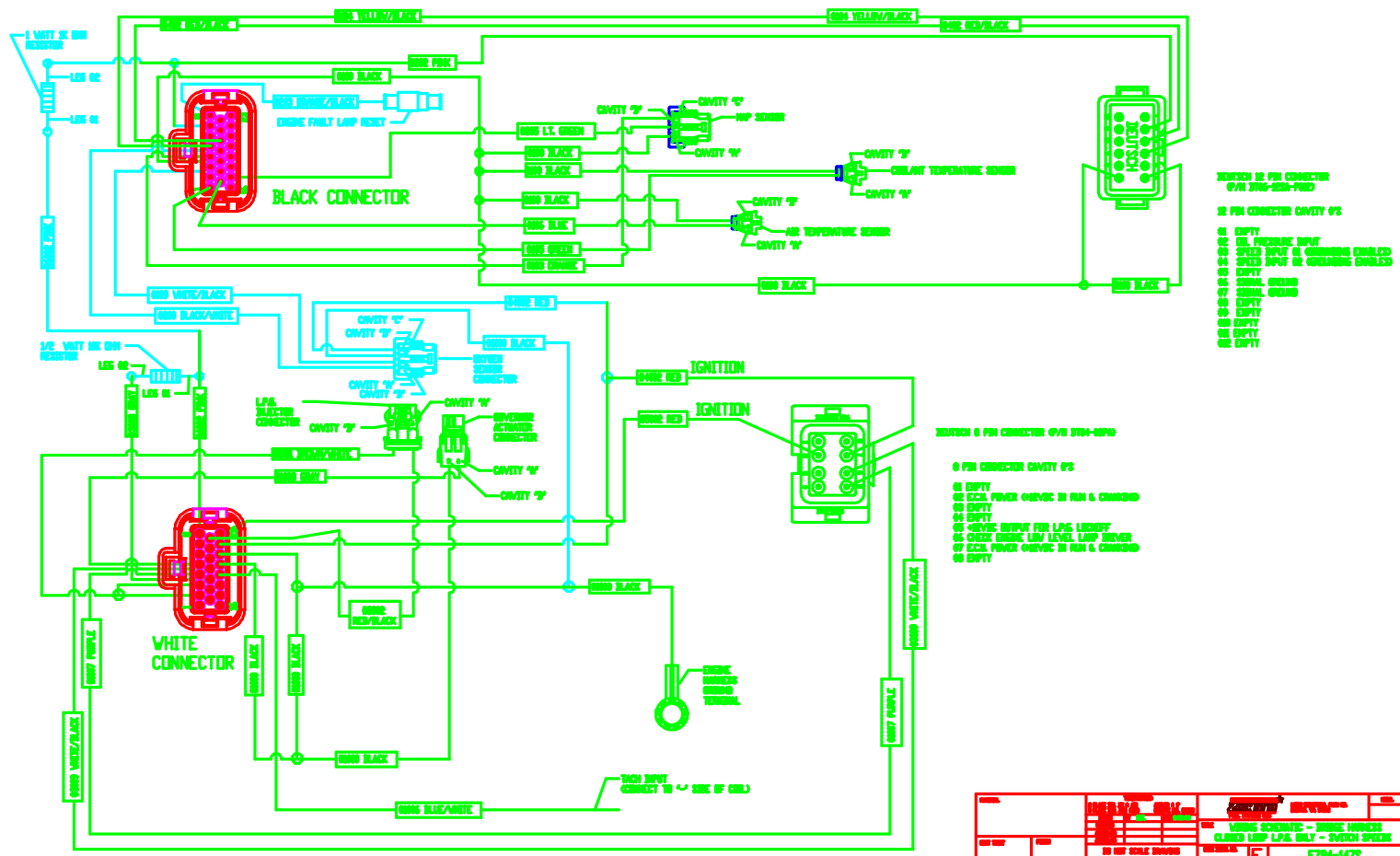


THIS SCHEMATIC IS FOR THE 1978-1980 4-CYCLE ENGINE. IT IS NOT VALID FOR THE 2-CYCLE ENGINE. IT IS NOT VALID FOR THE 1977 ENGINE.

REV	DESCRIPTION	DATE	BY
1	ISSUED	11/80	...
2
3



- 10 PIN CONNECTOR (P/N 3765-223-712)
- 01 PIN CONNECTOR CAVITY #2
 - 01 EMPTY
 - 02 0V. FREQUENCY INPUT
 - 03 SPEED INPUT IN COMMANDS ENABLED
 - 04 SPEED INPUT IN COMMANDS DISABLED
 - 05 EMPTY
 - 06 SIGNAL GROUND
 - 07 SIGNAL GROUND
 - 08 EMPTY
 - 09 EMPTY
 - 10 EMPTY

- 5 PIN CONNECTOR (P/N 3764-050)
- 01 PIN CONNECTOR CAVITY #2
 - 01 EMPTY
 - 02 EXCL. POWER (OVERC. IN RUN & COMMAND)
 - 03 EMPTY
 - 04 EMPTY
 - 05 INVERSE INPUT FOR LPA LIGHTS
 - 06 EXCL. ENGINE LOW LEVEL LAMP DRIVER
 - 07 EXCL. POWER (OVERC. IN RUN & COMMAND)
 - 08 EMPTY
 - 09 EMPTY

REV	DESCRIPTION	DATE	BY
1	ISSUED	11/80	...
2
3

WIRING SCHEMATIC - ENGINE (4-CYCLE)
 CLOSED LOOP LPA ONLY - SWITCH SPEEDS
 10 OHM RESISTOR
 1.25 WATT 10 OHM RESISTOR
 E784-1475

